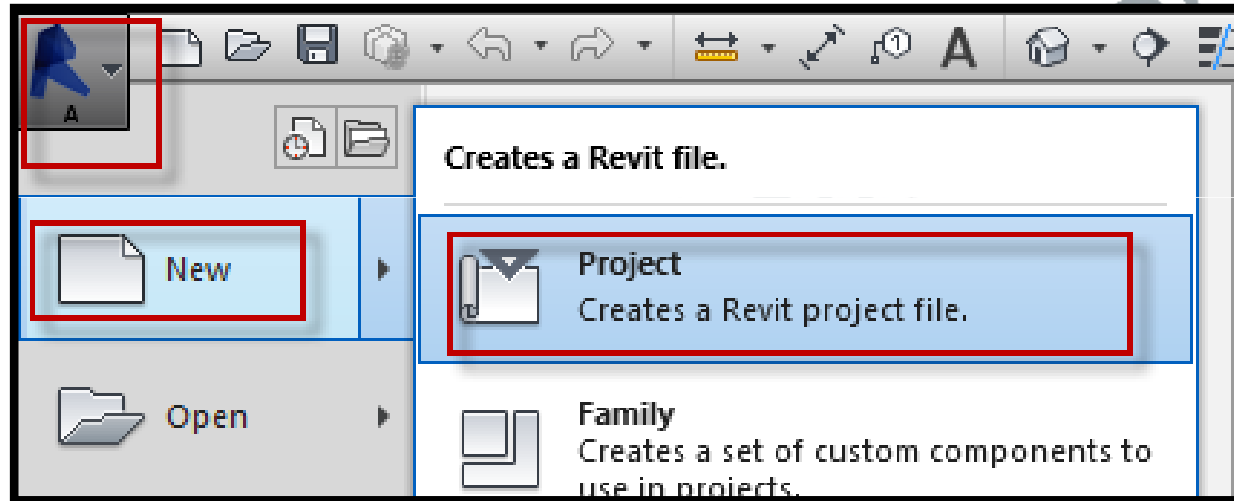


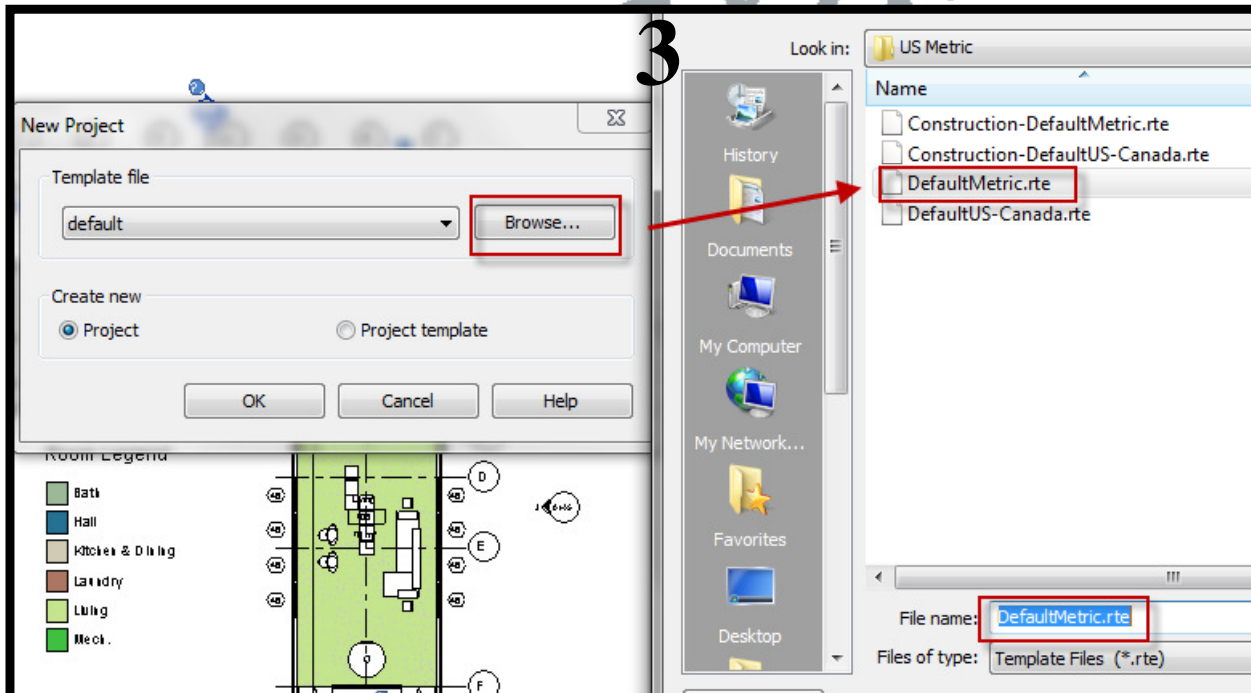
Learn Revit- with Snapshots

Lesson 02: Start a **New Project**

1



2

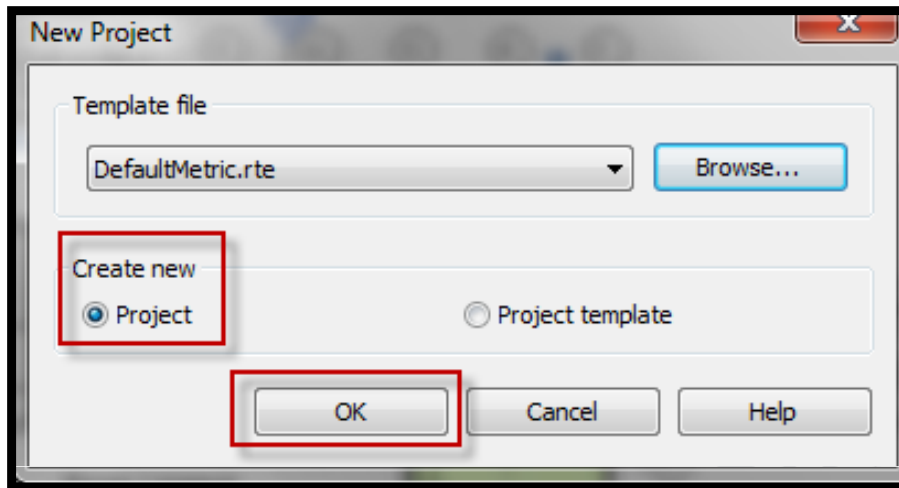


3

1. To open new Project choose the right template according to Units required
2. Browse Imperial Templates – Default.rte for imperial units
3. If already set in options –file location- (as told in Lesson 01)no need to browse again.



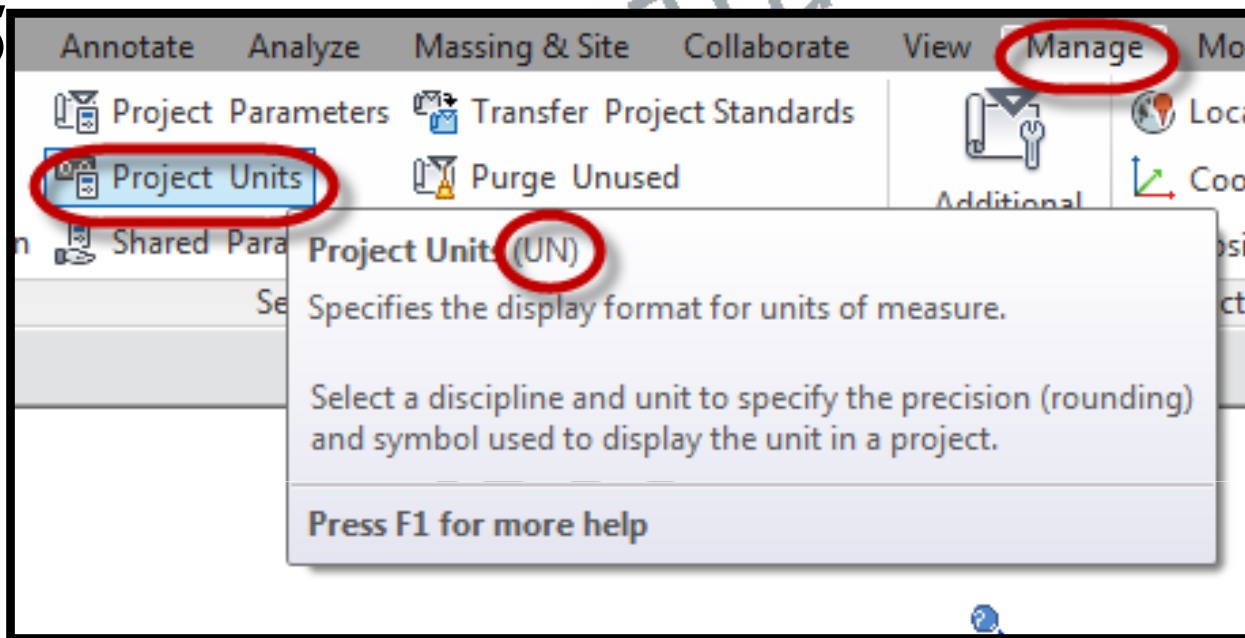
4



4. Choose create new project-OK

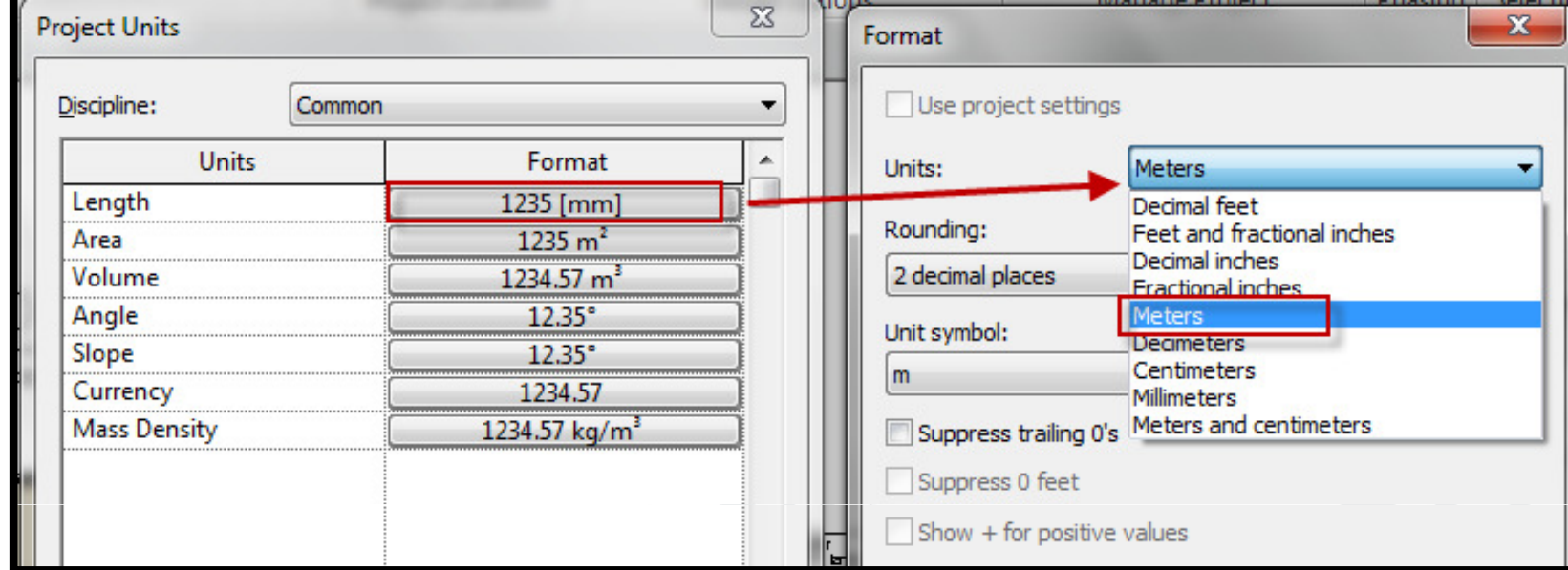
5. To check the Units set by the template, go to Project units(UN - Keyboard shortcut)

5

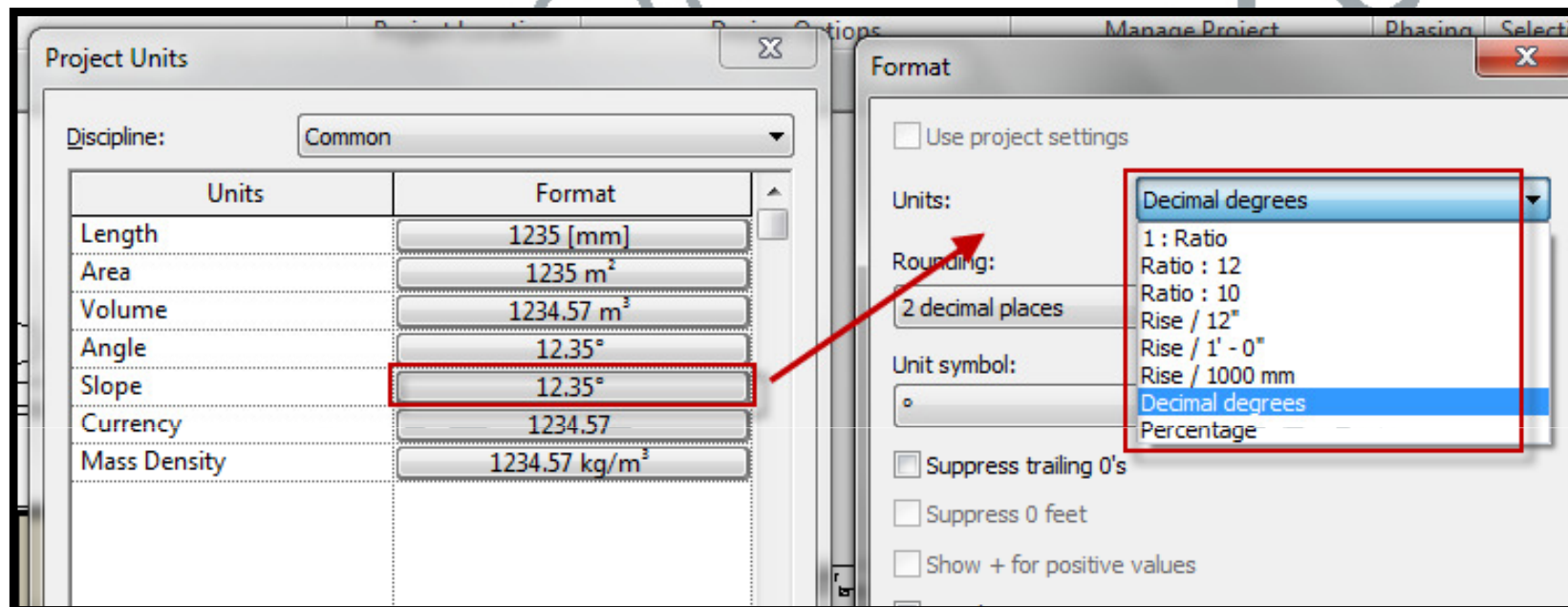


6. Set the units for Length, area, volume etc as required.





6



7

7. Slope units are meant for some Revit elements like Roof, Floor etc that can take slope.
8. Choose the precision under Rounding
9. Unit symbol will give the suffix of the unit chosen.

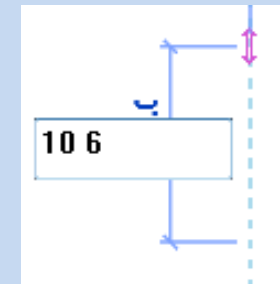




Some Tips:

- Shortcut to enter feet & inches, eg. to enter 10'6"
Enter: **10 spacebar 6**
- Revit will not have any conflict if **project units** are **changed** anytime, the drawing does **not need scaling** like in AutoCAD.
- So if you have **set in units Millimeter**, But want to enter the **value in feet and inches** just add the suffix of the unit

Eg Units are in **Millimeter**, I want to enter value in **centimeter**,
Enter the value with suffix cm, say **23cm**



AEC
AECTrainer

