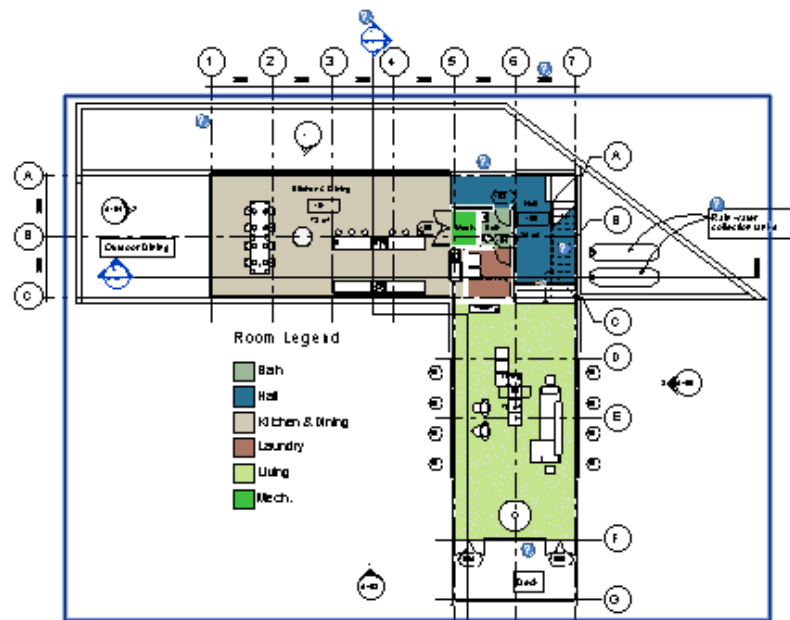


# Learn Revit- with Snapshots

## Revit Architecture 2014 **New features:**

### 1. Non Rectangular Crop regions & Callouts

1



Floor Plan : Level 1

Switch on the show crop region to see the boundary of the crop region

2

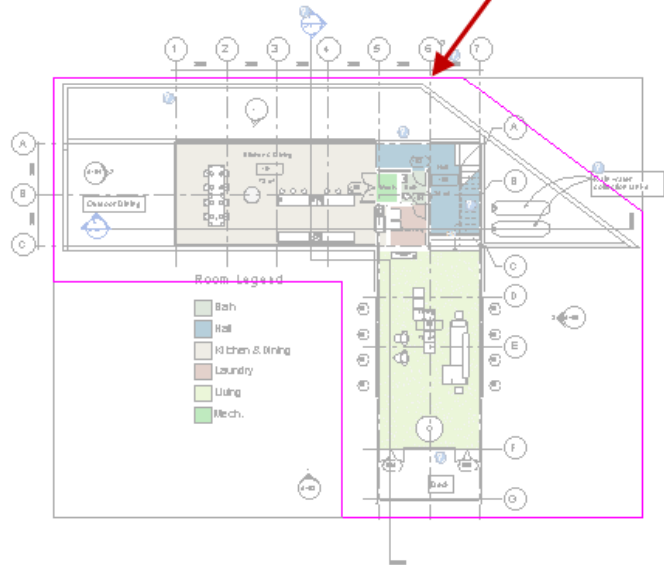
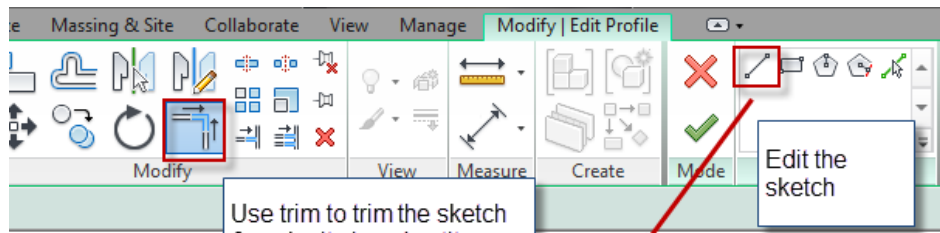


Press F1 for more help

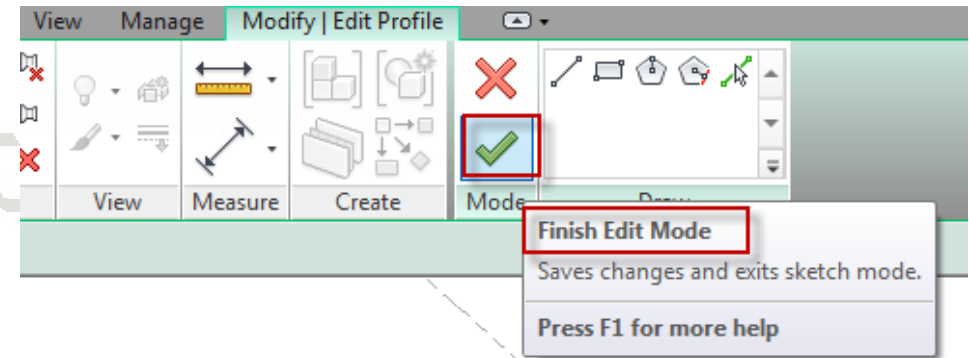
1. Switch on the show crop region tool to see the crop boundary .
2. Select the Boundary & click on Edit crop in the ribbon



3



4



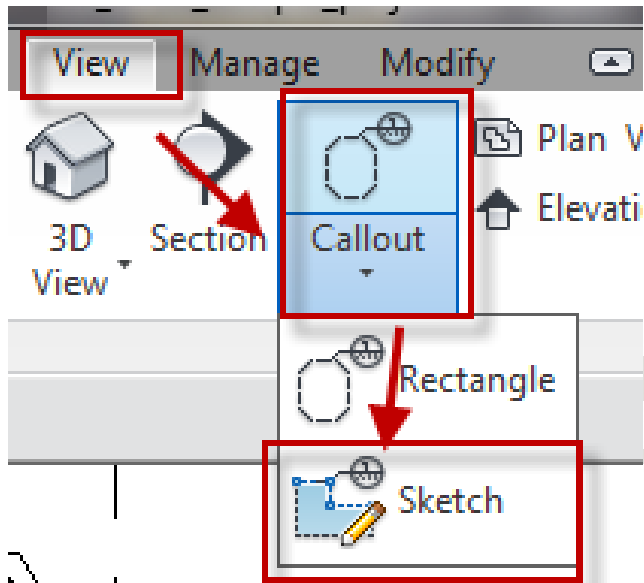
5



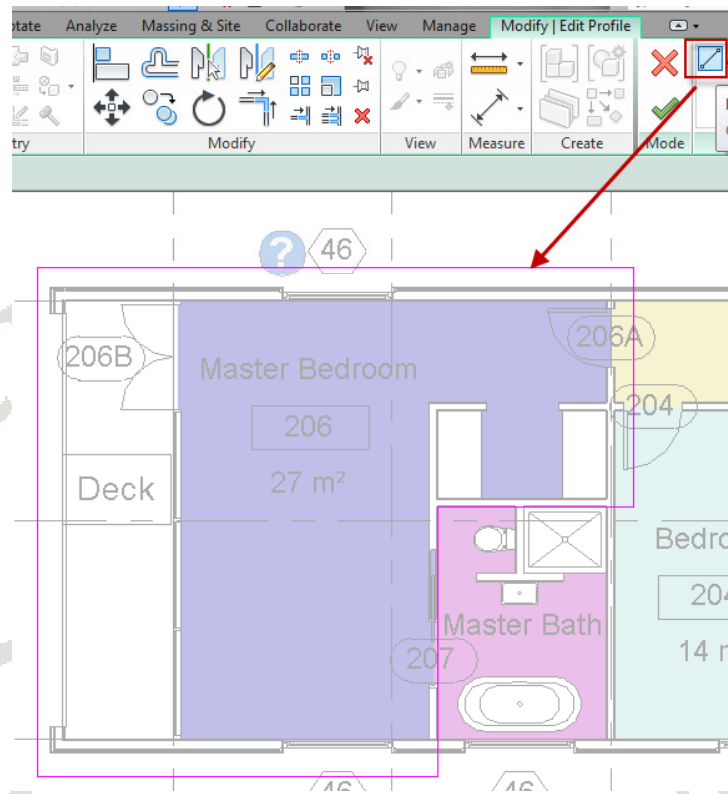
3. Edit the sketch of the crop region using the draw tools
4. Finish the edit mode
5. Switch off the show crop region tool to hide the region



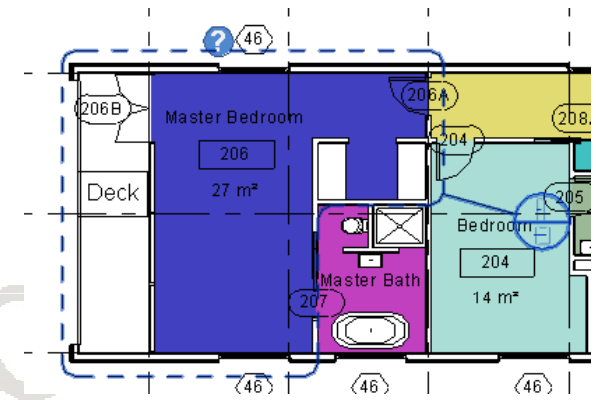
6



7



8



- 6. Choose Callout by Sketch from view tab
- 7. Sketch the shape of the callout using the draw tools
- 8. Finish the edit mode to see the callout shape

